



3 bed detached house to buy in

Fairville Road, Fairfield, Stockton-on-Tees,
Cleveland, TS19 7NA

£280,000

 x3  x1  x1

Tenure

Freehold

Property features

- ✓ Popular Fairfield Location
- ✓ 3 Double Bedrooms
- ✓ Rear Garden With Decking Area
- ✓ Driveway Large Enough For Multiple Vehicle Parking

Driveway & Garage parking

Key Information

- ✓ Council Tax: Band C
- ✓ Heating supply: Gas

Description

*****3 Bedroom Detached Property*****

A beautifully presented three-bedroom detached dormer bungalow, ideally situated on the highly sought-after Fairville Road in Fairfield, Stockton-on-Tees. Offering spacious and versatile accommodation throughout, this charming home is perfect for families, downsizers, or anyone seeking stylish living in a prime residential location.

Upon entering, you are welcomed by a bright and inviting entrance hall leading into a generous lounge, ideal for relaxing and entertaining. The well-appointed kitchen provides ample storage and workspace, while the stunning conservatory to the rear offers an additional reception space flooded with natural light and overlooking the garden. A practical utility room adds further convenience to this thoughtfully designed home.

The property boasts three well-proportioned double bedrooms, offering flexible accommodation options, alongside a modern family bathroom finished to a high standard.

Externally, the home continues to impress with a substantial driveway providing off-road parking for multiple vehicles, in addition to a garage. To the rear, the enclosed garden features an attractive decking area, perfect for outdoor dining, entertaining, or simply enjoying the warmer months.

Located within reach of local amenities, reputable schools, and excellent transport links, this exceptional bungalow combines comfort, space, and convenience in one desirable package.

For more information and to arrange an internal inspection please contact the Stockton branch today.

Council Tax Band: C

Tenure: Freehold

Price: £280,000

Property Type: Detached House

Parking: Driveway & Garage

Heating: Gas

Entrance

Hallway

Lounge

7.43m x 2.39m (24'4" x 7'10")



Kitchen

3.77m x 2.66m (12'4" x 8'8")



Conservatory

5.60m x 3.15m (18'4" x 10'4")



Utility Room

2.82m x 1.42m (9'3" x 4'7")

Bedroom 1

3.63m x 3.43m (11'10" x 11'3")



Family Bathroom



1st Floor Landing

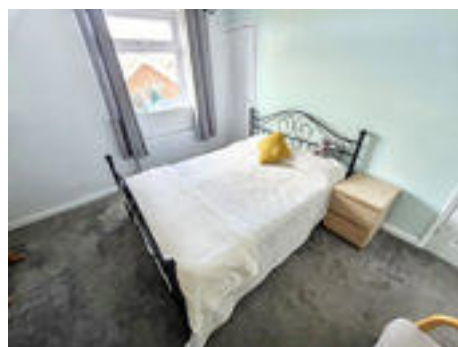
Bedroom 2

6.16m x 3.06m (20'2" x 10'0")



Bedroom 3

3.84m x 3.67m (12'7" x 12'0")



External



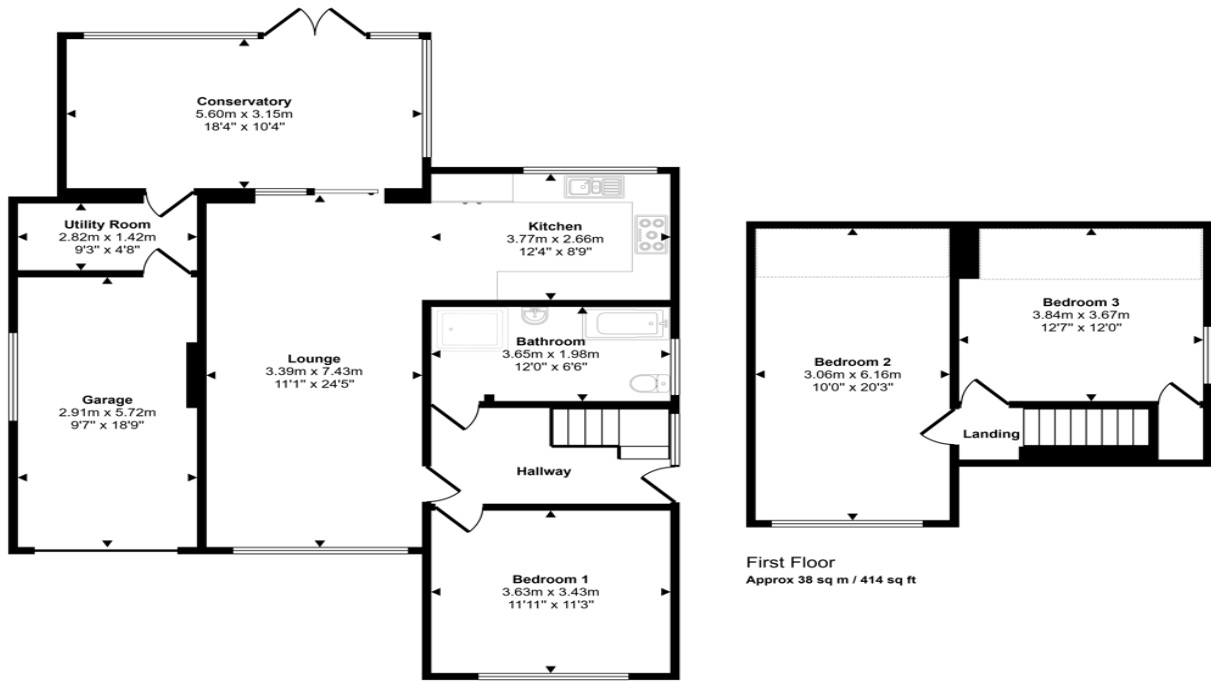
Garage

5.72m x 2.91m (18'9" x 9'6")

Floor Plan



Approx Gross Internal Area
145 sq m / 1556 sq ft



Ground Floor
Approx 106 sq m / 1142 sq ft

Denotes head height below 1.5m

This floorplan is only for illustrative purposes and is not to scale. Measurements of rooms, doors, windows, and any items are approximate and no responsibility is taken for any error, omission or mis-statement. Icons of items such as bathroom suites are representations only and may not look like the real items. Made with Made Snappy 360.

Fairville Road, Fairfield, Stockton-on-Tees, Cleveland, TS19 7NA

Contact your local branch today for more information on this property:

1A Brackenthwaite, Leicester, Leicestershire, LE4 7GA, <https://laxmanrealestate.com/contact>

These particulars, whilst believed to be accurate are set out as a general outline only for guidance and do not constitute any part of an offer or contract. Intending purchasers should not rely on them as statements of representation of fact, but must satisfy themselves by inspection or otherwise as to their accuracy. No person in this firms employment has the authority to make or give any representation or warranty in respect of the property.

