



## 4 bed town house to buy in NE29

Elswick Street, Collingwood Grange, North Shields, Tyne and Wear, NE29 7FD

# £299,950

 x4  x2  x2

Tenure

**Freehold**

## Property features

- ✓ Four bedrooms
- ✓ En-suite
- ✓ Off street parking
- ✓ Cul-de-sac location
- ✓ EPC Rating B

Garage parking

Garden

## Key Information

- ✓ Council Tax: Band D
- ✓ EPC Rating: B
- ✓ Heating supply: Gas

## Description

Situated in a quiet cul-de-sac location, this impressive four-bedroom townhouse offers spacious and versatile living accommodation arranged over three floors, making it ideal for modern family life.

The property features a welcoming lounge with a charming bay window and direct access to the rear garden, creating a bright and relaxing living space. At the heart of the home is a stylish integrated kitchen diner, complete with high-quality appliances and a built-in wine chiller, perfect for both everyday living and entertaining.

Upstairs, the generous master bedroom benefits from its own en-suite bathroom and a walk-in wardrobe, providing a luxurious private retreat. The remaining bedrooms are well-proportioned and offer flexibility for family, guests, or home office use.

Additional features include a convenient downstairs W.C, a detached garage, and off-street parking. Outside, the property boasts a south-facing rear garden, ideal for enjoying sunshine throughout the day.

Combining space, comfort, and a desirable location, this superb home presents an excellent opportunity for families and professionals alike.

Council Tax Band: D

Tenure: Freehold

Price: £299,950

Property Type: Town House

USPs: Garden

Parking: Garage

Heating: Gas

## Lounge

Spacious, light-filled lounge featuring patio doors that open directly onto the garden, creating a bright and welcoming living space



## Kitchen

Stylish modern kitchen featuring an array of integrated appliances, including a dishwasher, oven and wine chiller, complemented by a spacious dining area

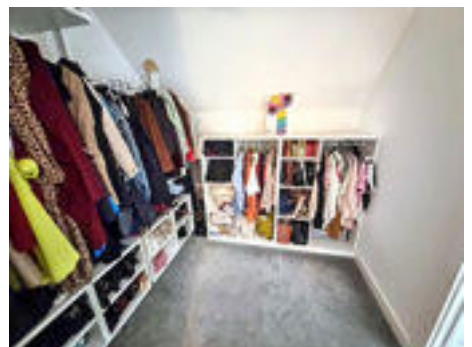


## Main bedroom

Impressive top-floor master bedroom offering an open-plan dressing area with fitted wardrobes and a private en-suite



## Dressing area



## En-suite

Contemporary en-suite featuring a low-level WC, walk-in shower, and hand basin, finished with tiled flooring and partially tiled walls



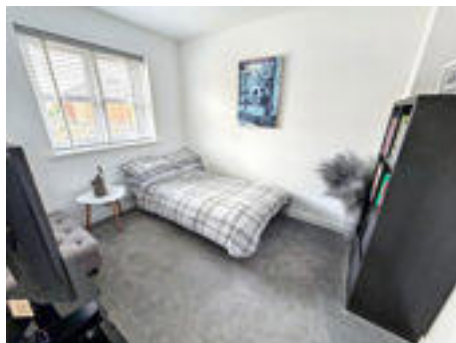
## Bedroom Two

Generous double bedroom featuring a double-glazed window and central heating radiator, providing a comfortable and well-lit space

---

## Bedroom Three

The third bedroom is generously sized, offering space for a double bed and benefiting from a double-glazed window



## Bedroom Four

A flexible fourth bedroom, perfectly suited as a nursery, home office, or study space



## Bathroom

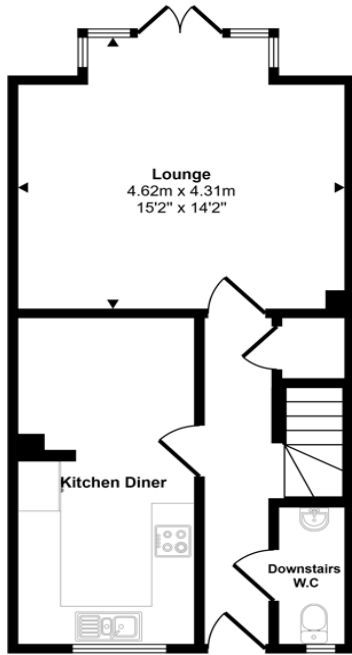
Contemporary family bathroom fitted with a panelled bath, walk-in shower, hand basin and low-level WC, complemented by tiled flooring and partially tiled walls



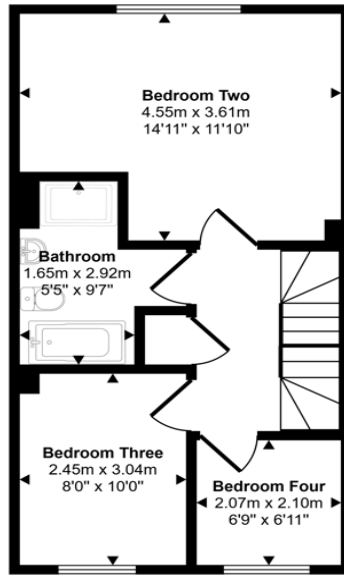
## Garden



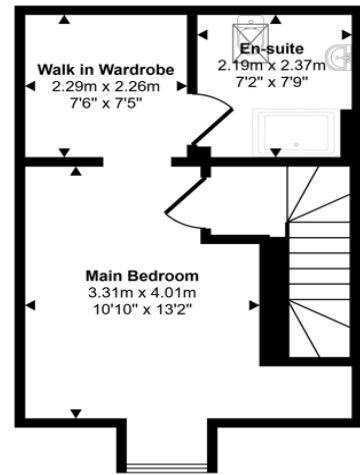
Approx Gross Internal Area  
114 sq m / 1230 sq ft



**Ground Floor**  
Approx 43 sq m / 460 sq ft



**First Floor**  
Approx 41 sq m / 438 sq ft



**Second Floor**  
Approx 31 sq m / 332 sq ft

This floorplan is only for illustrative purposes and is not to scale. Measurements of rooms, doors, windows, and any items are approximate and no responsibility is taken for any error, omission or mis-statement. Icons of items such as bathroom suites are representations only and may not look like the real items. Made with Made Snappy 360.

Energy Efficiency Rating		
	Current	Potential
<i>Very energy efficient - lower running costs</i>		
(92-100) <b>A</b>		95
(81-91) <b>B</b>	85	
(69-80) <b>C</b>		
(55-68) <b>D</b>		
(39-54) <b>E</b>		
(21-38) <b>F</b>		
(1-20) <b>G</b>		
<i>Not energy efficient - higher running costs</i>		
<b>England, Scotland &amp; Wales</b>	EU Directive 2002/91/EC	

Elswick Street, Collingwood Grange, North Shields, Tyne and Wear, NE29 7FD

Contact your local branch today for more information on this property:

**1A Brackenthwaite, Leicester, Leicestershire, LE4 7GA, <https://laxmanrealestate.com/contact>**

These particulars, whilst believed to be accurate are set out as a general outline only for guidance and do not constitute any part of an offer or contract. Intending purchasers should not rely on them as statements of representation of fact, but must satisfy themselves by inspection or otherwise as to their accuracy. No person in this firms employment has the authority to make or give any representation or warranty in respect of the property.

